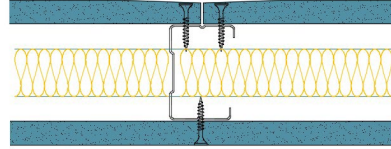


50-K-53(25) - SPEEDLINE System Data Sheet - Version V1 (24-10-23)

SPEEDLINE 50mm 'C' Stud Partition @600mm Ctrs,
with Knauf 12.5mm Soundshield Plus each side,
25mm APR



System Performance Breakdown

Fire Resistance:

BS476 Part 22:1987:

Test Ref & Date or Applied Ref & Report:

Max Height:

Thickness:

Duty Grade: BS 5234: Part 2:1992:

Sound Insulation:

30/30 Minutes (Integrity/Insulation).

BTC 17436F - BRE Report P102396-1011B

Refer to Speedline Specification Clause

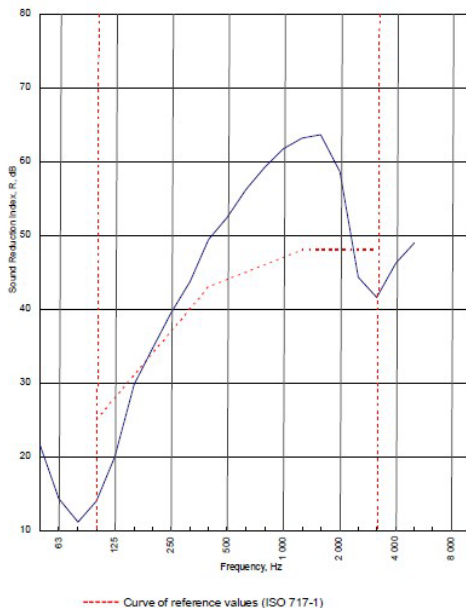
77 mm. (At Base Track, Excluding Finishes)

Medium - Annexes A-F

44 $R_{w,dB}$, Date Tested or Assessed Against - 17/06/2011

Test Code:
H17386FA
Test Date:
17/06/2011

Freq. Hz	R dB
50	21.5
63	14.3
80	11.1
100	13.9
125	20.0
160	29.7
200	34.6
250	39.4
315	43.7
400	49.4
500	52.4
630	56.3
800	59.2
1000	61.7
1250	63.2
1600	63.7
2000	58.7
2500	44.3
3150	41.6
4000	46.2
5000	49.0
6300	
8000	
10000	



Rating according to BS EN ISO 717-1:1997	R_w (C;Ctr) = 44 (-4;-11) dB		
Evaluation based on laboratory measurement results obtained by an engineering method:	$C_{50-150} = -6$ dB	$C_{50-500} = -5$ dB	$C_{100-500} = -3$ dB
	$C_{5-50} = -15$ dB	$C_{50-1000} = -15$ dB	$C_{100-5000} = -11$ dB

TESTED AT ONE OF THE UKAS ACCREDITED LABORATORIES BELOW

B.T.C (H-Ref on Graph)

B.R.E

AIRO

S.R.L

Customer: Metsec plc Hepsec Division

BTC 17410A: Page 9 of 11



SPEEDLINE Drywall Systems, Adsetts House, 16 Europa View, Sheffield Business Park, Sheffield, S9 1XH.

Tel: 0114 231 8030.

Email: enquiries@speedlinedrywall.co.uk

(As per the requirements set out in ISO/IEC 17025:2017 regarding test data the results stated have been carried out by voestalpine Metsec plc as part of the contract to supply Speedline Metal Sections to SIG Plc)